

How to use MySQL in Basic4PPC

■ Desktop Only

Author: Sistemas, 06/10/2010

Special thanks to: Pachuquin, Specci48

STEPS TO GET MySQL ENVIRONMENT

1. Download and install **MySQL Community Server 5.1.46**, Windows (x86, 32-bit), MSI Installer:

<http://www.mysql.com/downloads/mysql/>

<http://www.mysql.com/downloads/mirror.php?id=387719>

mysql-essential-5.1.46-win32.msi

2. Download and install the **MySQL Workbench 5.2.20 beta**, Windows (x86, 32-bit), MSI Installer:

<http://dev.mysql.com/downloads/workbench/5.2.html/>

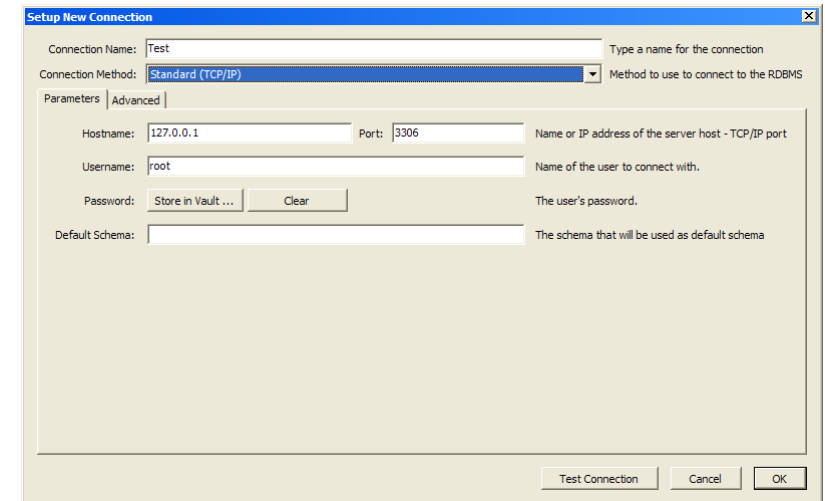
<http://dev.mysql.com/downloads/mirror.php?id=387781>

mysql-workbench-oss-5.2.20-beta-win32.msi

STEPS TO CREATE SOME DATA IN MySQL

3. Using the Workbench, create your database and some data:

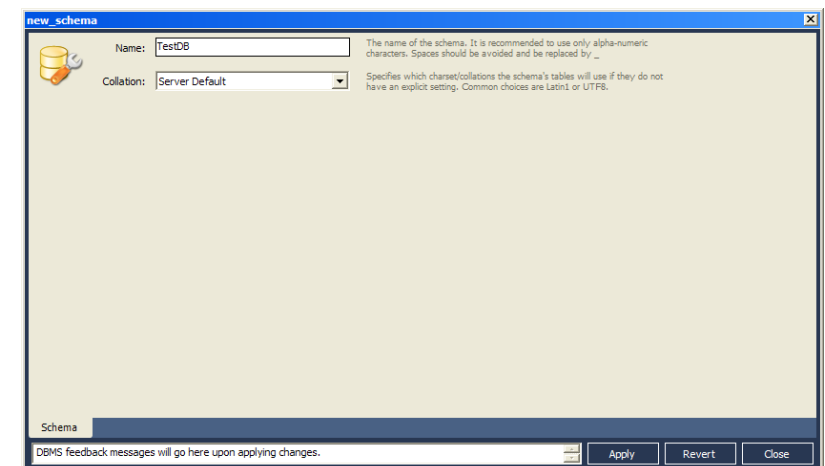
New Connection 'Test'

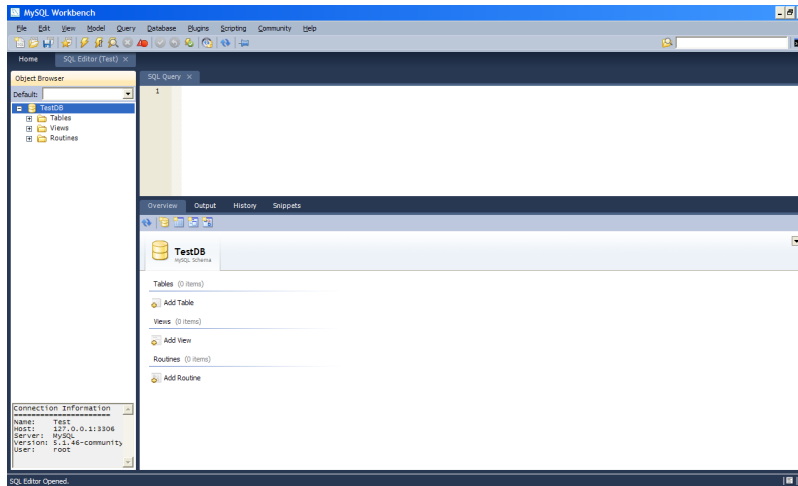


Test connection

Open connection

Create schema (database) 'TestDB'





Create tables and the rest of objects, using either the SQL Query window or the table click-right wizard. Example:

```
CREATE TABLE testdb.`t1` (
  `F1` int(11) NOT NULL,
  `F2` varchar(45) DEFAULT NULL,
  `F3` varchar(45) DEFAULT NULL,
  PRIMARY KEY (`F1`)
) ENGINE=InnoDB DEFAULT CHARSET=utf8;
```

Add some records, for example:

```
INSERT INTO `testdb`.`t1` ('F1','F2','F3')
VALUES (1,'a','aa');

INSERT INTO `testdb`.`t1` ('F1','F2','F3')
VALUES (2,'b','bb');
```

STEPS TO BUILD THE DATABASE CONNECTION

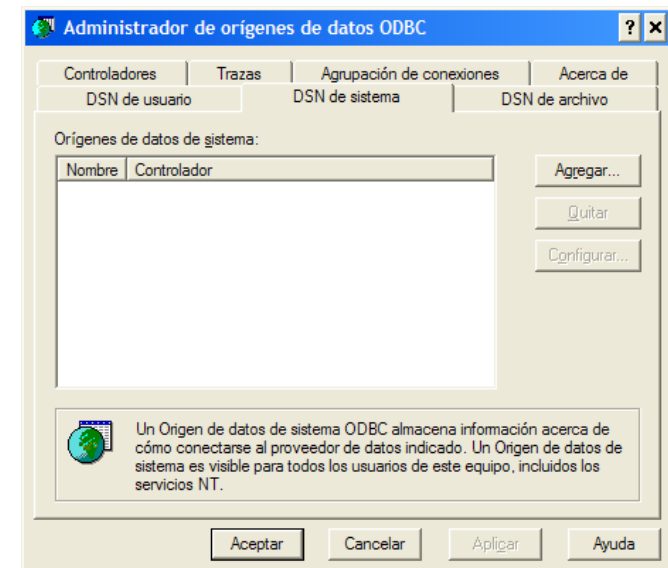
- Download and install **MySQL Connector-ODBC 5.1.6**, Windows (x86, 32-bit), MSI Installer:

<http://www.mysql.com/downloads/connector/odbc/>

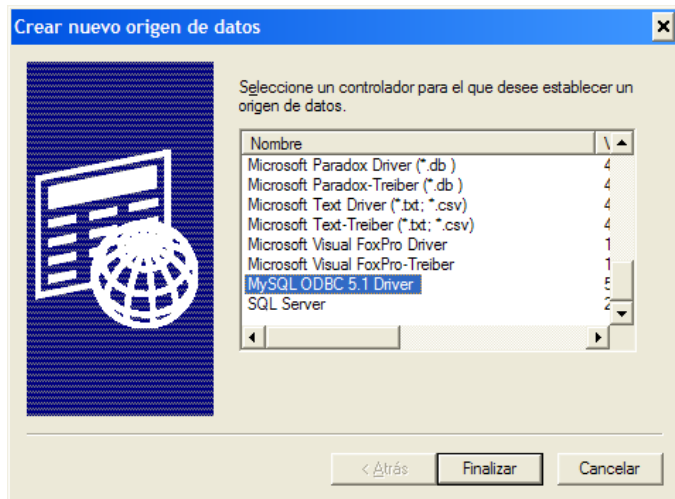
<http://www.mysql.com/downloads/mirror.php?id=376346>

mysql-connector-odbc-5.1.6-win32.msi

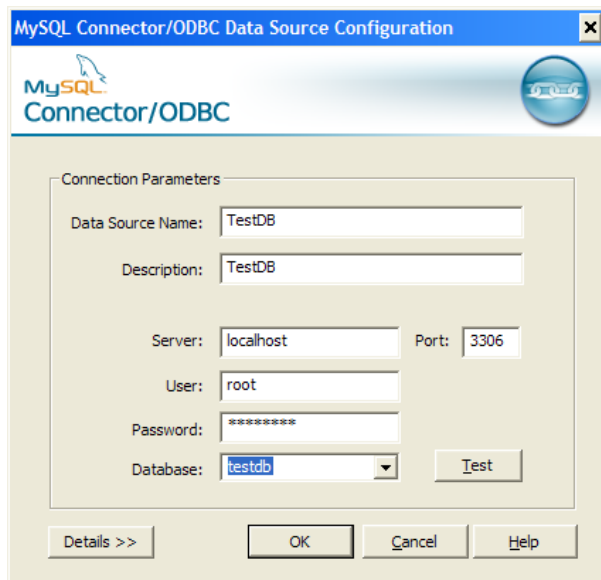
- In your PC, go to Administrative Tools. Open Data Source- ODBC. Go to DSN system.



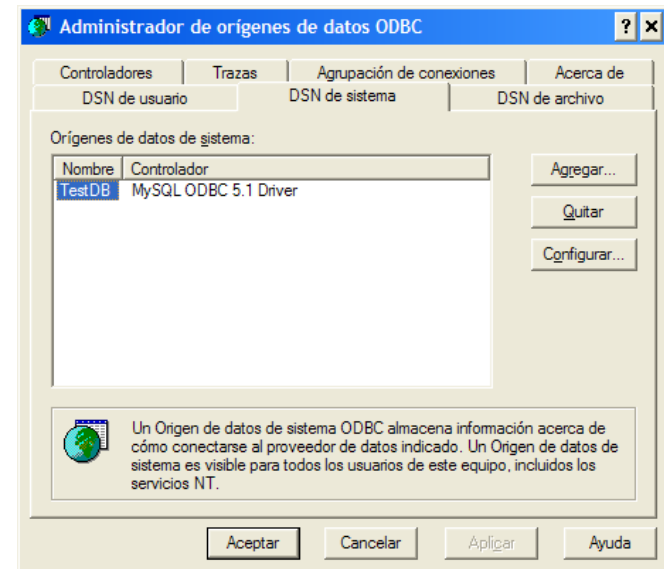
Add a new data source. Select MySQL ODBC 5.1 Driver:



Configure the parameters like this:



Test, OK and accept:



- Download and install the **ODBC .NET Data Provider**, version 1.0.4030.0:

<http://www.microsoft.com/downloads/details.aspx?FamilyID=6ccd8427-1017-4f33-a062-d165078e32b1&displaylang=en>

odbc_net.msi

- Download the **Basic4PPC ODBC library**:

http://www.basic4ppc.com/forum/attachments/additional-libraries/5509d1269089960-odbc-library-pachodbc_0.5.zip

pachODBC_0.5.zip

Unzip the file and you will get 2 files: pachODBC.cs and pachODBC.dll

The file 'pachODBC.dll' must be copied to the Basic4PPC Library folder (C:\Archivos de programa\Anywhere Software\Basic4ppc Desktop\Libraries or any other depending on your PC language setup)

STEPS TO ENJOY THE CONNECTION WITH MySQL FROM BASIC4PPC

8. Create a test program in Basic4PPC. Use this example, it helps:

```
Version=6.90
NumberOfForms=0
FormWidth=240
FormHeight=268
IconFile=
NumberOfDesktopIncludes=1
DesktopInclude1=pachODBC.dll
NumberOfDeviceIncludes=0
NumberOfObjects=3
Object1=cmd:ODBCCommand
Object2=reader:ODBCReader
Object3=con:ODBCConnection
NumberOfModules=0
Sub designer
end sub
@EndOfDesignText@
'HOW TO USE A MYSQL DATABASE IN BASIC4PPC
'EXAMPLE

Sub Globals
'PachODBC.dll must be added manually as a component
'Objects con, cmd, reader must be added manually
End Sub

Sub App_Start
con.New1
con.Open("DSN=TestDB;")
cmd.New1("",con.Value)

con.BeginTransaction(cmd.Value)

'Example of CREATE TABLE - Check results using MySQL Workbench
cmd.CommandText= "CREATE TABLE t2 (F1 Int(11) Not NULL,F2
varchar(45) DEFAULT NULL,F3 varchar(45) DEFAULT NULL)
ENGINE=InnoDB DEFAULT CHARSET=utf8"
cmd.ExecuteNonQuery

'Example of INSERT - Check results using MySQL Workbench
cmd.CommandText= "INSERT INTO t2 VALUES (1,#a#,#aa#)"
cmd.CommandText = StrReplace (cmd.CommandText,"#",Chr(39))
cmd.ExecuteNonQuery

'EXAMPLE of SELECT - Check results in the msgboxs
reader.New1
cmd.CommandText="SELECT * FROM t1 WHERE F1>=" & 0 & " AND F1<="
& 99
reader.Value=cmd.ExecuteReader
Do While reader.ReadNextRow
Msgbox(reader.GetValue(0)&"," & reader.GetValue(1)&","
"&reader.GetValue(2))
Loop
reader.Close

con.EndTransaction
End Sub
```